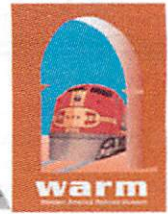


the **Semaphore**



western america railroad museum • barstow ca Spring 2013

10th Annual Railfest 2013

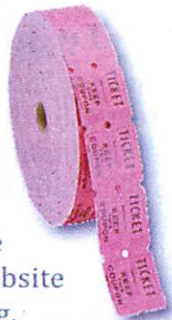
WARM's 10th Annual Rail and Craft Fest - October 12th and 13th

This event is the Museum's main fundraiser for the year. We're getting the word out early in the hope that all you crafter's and vendor's can make your plans for this 10th year event. As in the past, we will have model railroaders set-up their train displays inside the Harvey House. They are really

amazing and children and grown-ups alike enjoy them. We will again have great food; open rail-cars to



tour, and two Museums to visit. There are many more attractions to be scheduled. We look forward to seeing lots of you come out and support your local attractions. Our volunteers and supporters work diligently each year to make this event possible. As always we will have our Opportunity Drawings with lots of great gifts. If you have any questions please give us a call at 760-256-9276. For those of you interested in becoming a vendor applications can be downloaded from our website www.barstowrailmuseum.org.



BNSF Employees Will be Returning This Year For Their Annual Family Days

The Harvey House looks forward to hosting BNSF family days again this year. Employees and their families can relax, enjoy the day and explore the locomotives.

Something To Keep In Mind....

A field trip for a group of second grader's is scheduled to visit the Harvey House on May 31st. They will visit the Chamber of Commerce, Route 66 Museum, and WARM. If you have a group you would like to schedule during the days we are open, please give us a call at 760-256-9276.

Special Thanks To The Run 8 Team...More Inside....



The Run 8 Team had a great time at this past years Rail & Craft Fest, demonstrating their new Run 8 Train Simulator - BNSF Mojave Sub. We hope they will be joining us again at this years Rail & Craft Fest.

**A Publication of the Western America
Railroad Museum Barstow, CA**

©2006 Western America Railroad Museum

Mission Statement: The objective is to provide historical displays and educational forums that focus on both railroad history and the technological development of the railroad industry. The emphasis encompasses not only the past, but the present and the future as well, realizing that such a broad scope is essential to understanding the role of railroading in Western America.

Officers:

President: Lawrence Dale
Vice President: Robert Clayton
Secretary: Margaret San Millan
Treasurer: Donna Clayton
Membership: Robin Clayton

Directors:

Lawrence Dale
Robert Clayton
Norman Orfall
Margaret San Millan
Raymond San Millan
Donna Clayton
Stanley Leak

Editor Semaphore:

Diane Maples

Contact:

Western America Railroad Museum
P.O. Box 703
Barstow, Ca. 92312-0703
Phone/Fax (760) 256-warm(9276)
Email: warm95@verizon.net
Located at the Historic Harvey House
685 North First Street
Barstow, Ca.

The Semaphore is published semi-annually by The Western America Railroad Museum and distributed free of charge to Museum Members.

For membership information call: (760) 256-warm (9276) or write to the above address. WARM is a 501 (c) (3) Non Profit Corporation.

Permission to reproduce copyrighted material from the newsletter is available by writing to the Museum.



email: warm95@verizon.net

www.barstowrailmuseum.org

President's Message

by L.E. Dale

Our thanks and appreciation goes to Don Van Hook for the work he does to maintain the model train we have on display in the Museum. He has recently refurbished it and it runs great.

We would also like to thank Diane Denton who has recently donated a pallet full of railroad books and periodicals. Her deceased husband was a railroad historian and an avid collector. We are glad to be able to share his collection with others.

As I mentioned in our previous newsletter we are pursuing grant funding, and have submitted our first round of letters and are awaiting responses. This funding is vital to the accomplishment of our mission.

On a final note we are in need of volunteers. If you can spare just five hours a month it would really help. Just call or stop in on a Friday, Saturday, or Sunday between the hours of 11:00 a.m. and 4:00 p.m. and spend a little time with the volunteer on that day. You don't have to know anything about railroading just have an interest in meeting people. The majority of our visitor's are from out of the area or out of the country. A lot of them have interesting stories themselves and they are all very interested in the Museum. They really appreciate that we are here and they are able to learn some of the history of the railroads. A lot of them love the idea that there are real trains running by outside in the rail yard.

The Run 8 Team Demonstrating Their New Run 8 Train Simulator - BNSF Mojave Sub At Last Years Rail & Craft Fest



John Greenstone visiting with Pete, Mark Fox & Mike

SPECIAL THANKS

To John Greenstone...

who spent most of his time at last years Rail Fest getting the museum's cab simulator ready for Run8 so it now looks like the museum is one step closer to finally having a working cab train simulator which will help generate much needed revenue for the museum's various projects that they have in the works. Stay tuned for more information on this exciting project as we go into 2013!

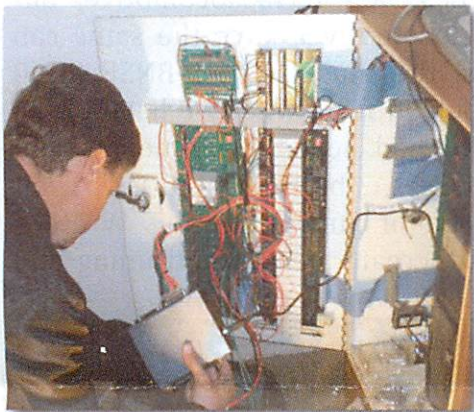
Read more about the about the Simulator Project

The Warm Cab Simulator Project

by John Greenstone, Run 8 Studios

My name is John Greenstone, of San Diego, Ca., I'm the Lead Programmer for Run-8 Train Simulator created by Run 8 Studios. My partners in Run 8 Studios are Brad Brown and our artist, Nigel Apperley.

At the end of September 2012, Brad and I attended the annual WARM event held at the Casa Del Desierto and showed off our Run8 Train Simulator. During the show, I was introduced to WARM's ex-BNSF cab mock-up and it was love at first sight. After a few hours of studying how it was put together, I found that we could adapt it to work with the



Run8, allowing the real-life locomotive controls to interface with our simulator software as though one were running a real train. Bob Clayton and I set forth to make this a reality.

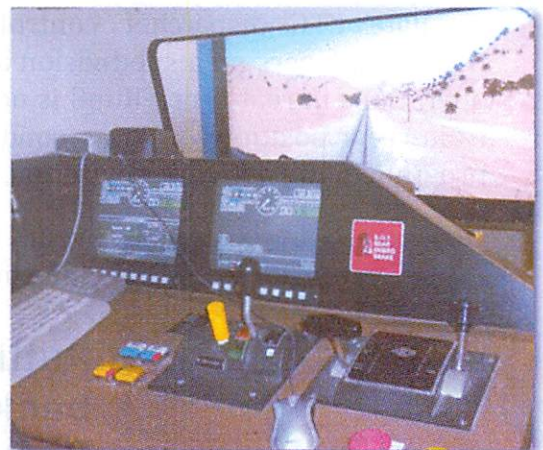


Over the course of several weekend trips to Barstow, I was able to interface the Cab-controls to the simulator. The first thing that had to be done was to order a piece of hardware called a "ReDac" from P.I. Engineering. This unit allows me to take the control of output voltages from the cab-controls and translate them into data that a computer can use. This required a lot of soldering mixed with a bit of perseverance and a minor amount of foul language, most of which occurred after museum hours so as not to offend to patrons. Through this unit I was able to hook up the throttle, train-brake, indy-brake, reverser, and all the other controls normally used by the engineer. I also had to spend several hours programming some special functions in Run8's code to accept and use data.



The next step was the engineer's data screens. This particular mock-up is of an EMD SD60 locomotive with that are known as "Desktop Controls". This unit also has two small monitors that are used to display locomotive data to the engineer, such as brake pipe pressure,

speed, throttle position, etc. In order to make full use of these two monitors, a second computer was required. This second computer receives data from the main simulator computer and draws the displays that are seen on the screens. This allows the engineer to interact with the locomotive just as one would do in real operations.





The final hurdle was to create the main forward display. We decided to use a large wide-screen television mounted out front of the windshield. Bob Clayton's wife Donna bravely donated the temporary use of her television to be used for testing, which was returned to her unscathed by the end of the day. With this we were able to test various positions and to see how things should fit together. Bob then was able to find a television suitable for the simulator and also custom build a stand to mount it in front of the cab.

The Run8 Train Simulator as of this date currently simulates General Electric's ES44 locomotive, but since most modern locomotives have the same cab and control layouts, the museum's ex-BNSF SD60 mock-up is not too far off from what we have in the simulator. We have had several comments from professional railroaders, both train-crew and

management, that our simulator is better than what is used for current training. WARM's cab-simulator shows how relatively simple it is for us to create a realistic training tool using the Run8 Train Simulator program. Currently, Run8 is sold to hobbyists who enjoy railroad simulation, however, our program can be easily adapted to suit the needs of a training environment. All the controls used in the WARM's cab simulator are real-life locomotive controls, and all of them are easily interfaced with our program, both Desktop and Traditional console types. With a second (or multiple) computers(s) on a LAN or wireless network, data screens can be reproduced, or even on instructor's station could be created to allow for sadistic fun at the expense of the rookie engineer. Run8 can also simulate CTC dispatcher control panels, and is capable of networking multiple trains/engineers on a subdivision along with a dispatcher to simulate entire subdivision operations in real-time. Run8 is not limited to just engineers and dispatchers, but other train-crew positions such as conductors or switchmen can also be trained using this program in the network environment.



Visit our website at www.run8studios.com for more information.

**Putting The TRAIN
back in "Train
Simulator"!**

Santa Fe GIFT SHOP & NEWS



by Margaret San Millan

Gift Shop: As a "thank you" to our visitors to the Museum, the Gift Shop will be offering a 10% discount on all books and DVD's during the month of May, so come in and make your selections on many great titles. Also, we will be getting a jump on 2014 with the arrival of two great calendars that will be available at the end of June. One is "Santa Fe Railway" and the other is "Howard Fogg's Trains." Howard Fogg is considered the all-time master of railroading art, who spent 50 years as an artist reinventing the steam age. A 10% discount will be available for these two calendars during the month of July.



We appreciate the continued financial support of Jacob and Rhonda Zamora who, for the past several years, have been very generous. Another special contributor this year that we would like to recognize is Liz Barnes.

**SPECIAL
MENTION**



Quick - Peach Cobbler

It's simple. It's quick. And it's sweet.....
A small portion goes a long way.

Preparation:

Grease 9"x13" baking dish and spread peaches. Mix melted butter with dry cake mix and crumble over the peaches. Bake at 350 degrees for 45 minutes. Serve with vanilla ice cream.

5 (15oz) canned peaches, drained
2 boxes yellow cake mix
1 cup melted butter





Equality
FOREVER

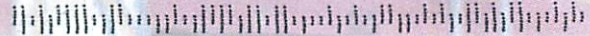
ADDRESS SERVICE REQUESTED



Western America Railroad Museum
685 North First Street
P.O. Box 703 Barstow, CA
92312-0703

Brad Brown
30 Train Staff
4821 Foster Ave
Barstow, Ca 92312

9560832914 C016



MEMBERSHIP RENEWAL

January 1, 2013 through December 31, 2013

Western America Railroad Museum
P.O. Box 703, Barstow, CA 92312
Phone (760) 256-9276

Please Print

Name _____ Date _____

Address _____ City _____

State _____ Zip _____ Telephone _____

E-mail _____

Check one: \$35.00 Payment enclosed (Make check payable to WARM and mail to: P.O. Box 703, Barstow CA. 92312

Master Card [] Card No. _____

American Express [] Card No. _____

Discover [] Card No. _____

American Express [] Card No. _____

Thank you for your donation! Annual dues are \$35.00 per individual for family (husband, wife and children under 18 yrs.)

Dear Members,

It is through your support that we are able to keep the Museum open for visitors from all over the world to enjoy.

As a reminder, WARM is a 501-c-3 organization and all donations are tax deductible. Remember our Museum is run by volunteers only, we have no paid employees.

Thank you again for your support.

Respectfully,
Robin Clayton
Membership Chairman

Proud members of the following organizations:



Barstow
Area Chamber of Commerce & Visitors Bureau



American Association for State and Local History



aim

Association of Railway Museums, Inc.